

GSSA Angle Bracket

Features

- L-shaped bracket with wide and stable support part
- Shelf board hides the installation part for clean appearance
- An oval hole at the middle allows to adjust the position vertically in 2 mm

Material

- Stainless steel 304, satin finish

Notes

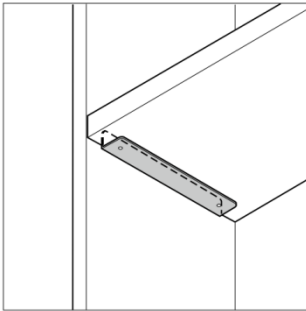
- Please install to side board. If installed to back board, it may fall off due to the inability to withstand the load.
- Please firmly install in a place with adequate strength
- When installing to a plasterboard, please screw in the core material
- Load capacity of below table is the value when using 2 angle brackets for 1 shelf board

Parts Included

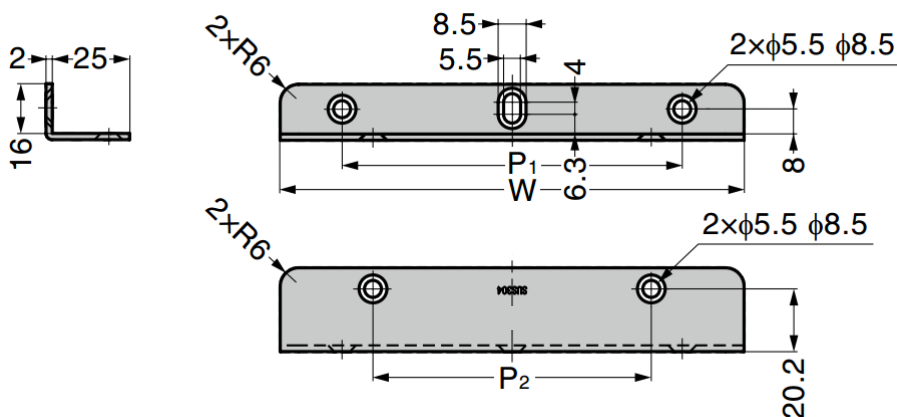
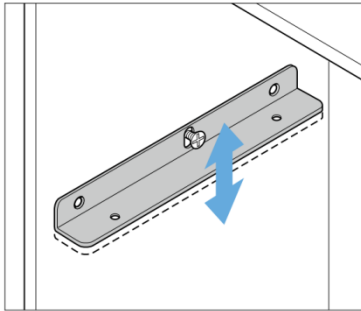
- Countersunk head tapping screw 3.5×16 (SUS)
- Countersunk head tapping screw 3.5×12 (SUS)



Installation



Adjustable in a Vertical Direction



Part No.	W	P ₁	P ₂	Load Capacity	
GSSA-100H	100	60	40	1,470 N	150 kg
GSSA-150H	150	110	90		
GSSA-200H	200	160	130		